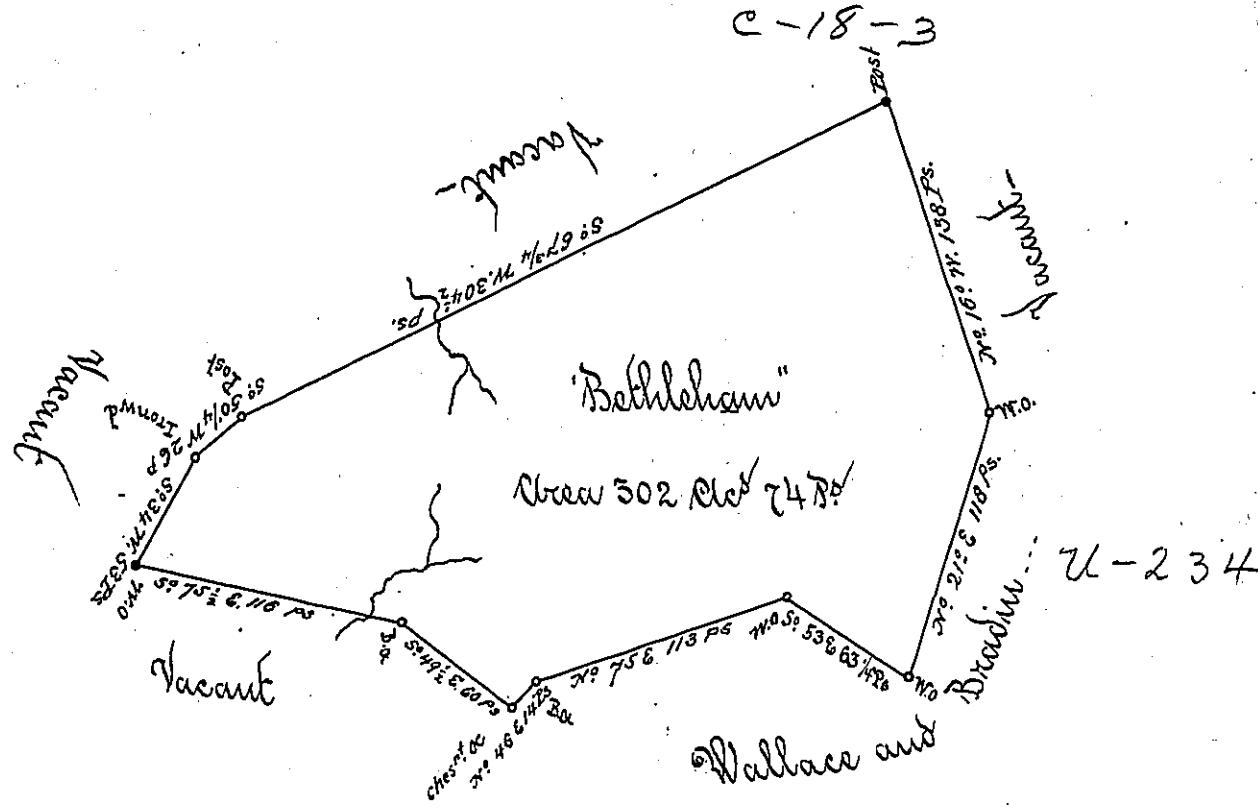


Center →  
BEAY Co. ✓  
✓

X  
117  
P18-301  
1-50



A Draught of a Survey call'd "Bethlehem" situate on the waters of Elk Run Run in Washing-  
ton County, Cont'g 302 Acs 74 Rs. and the usual allow<sup>ce</sup> for Highways &c. executed Nov<sup>r</sup> 28<sup>th</sup> 1786 in Dur-  
ance of a Warr<sup>nt</sup> granted to Geo Baker for 300 Acs dated Feb<sup>r</sup> 21<sup>st</sup> 1786.

J<sup>r</sup> Lukens Esq. S. Genl

Brasley Kerrill }  
Walter Ritchie } D. Ss

IN TESTIMONY that the above is a copy of the original remaining on file in  
the Department of Internal Affairs of Pennsylvania, made  
conformably to an Act of Assembly approved the 16th day of  
February, 1833, I have hereunto set my Hand and caused  
the Seal of said Department to be affixed at Harrisburg,  
this Second day of November 1903.

*George P. Brown*  
Secretary of Internal Affairs.